

Tennessee Industrial Electronics, LLC
1216 Heil Quaker BLVD
LaVergne, TN 37086
P: (615) 471-5070
F: (615) 793-3244

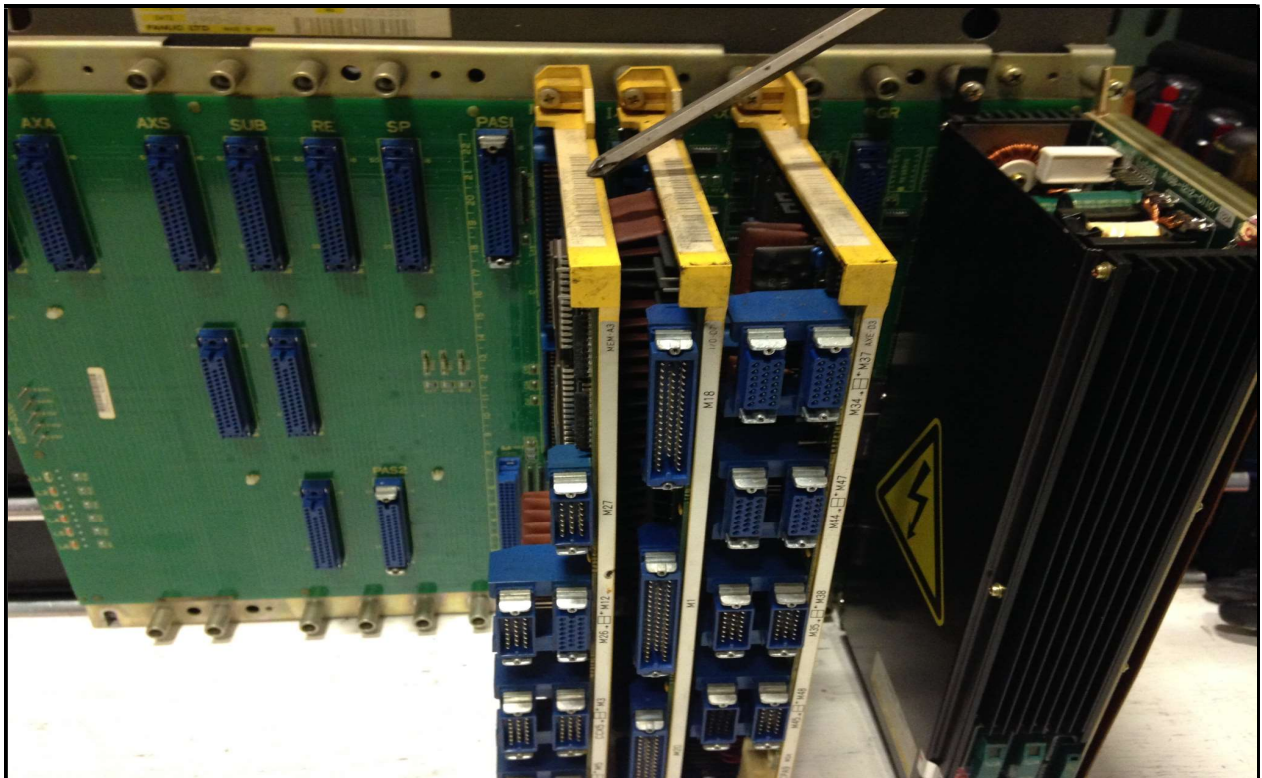


Fanuc PCB's have a 12-digit part number that starts with the letter "A". Many Fanuc PCB's have this 12-digit part number written in yellow ink on the green part of the circuit board. Most of the PCB's have a prefix of "A16B", "A17B", or "A20B".

If the part number you see on the PCB starts with "A320" or "A350", then flip the PCB over and look for the part number on the other side.

Many of the Fanuc PCB's that mount to a master PCB or backplane PCB do not have the full 12-digit "A16B", "A17B", or "A20B" part number written in the yellow ink. These PCB's usually have a yellow plastic frame with a mounting screw at the top and the bottom. These PCB's will have a white barcode sticker on the top. This barcode sticker will have the complete 12-digit "A16B" or "A20B" part number written on it.

If you cannot read this number, then please provide the 11 digits you can read along with pictures of your PCB, and we can help you identify the 12th digit.



Corporate Headquarters
1216 Heil Quaker Blvd.
LaVergne, TN 37086
www.fanucworld.com

AUTOMATION
-REPAIR-

44810 Vic Wertz Dr.
Clinton Township, MI 48036
www.tierepair.com

MASTER
Robotics

7300 Danielle Dr.
Almont, MI 48003
www.masterrobotics.com